

NATURAL COMMUNITIES OF EAGLE MARSH – FIRST APPROXIMATION

by Don Cunningham, Tony Fleming, and Betsy Yankowiak, 2014

PRESERVE LANDMARKS AND INFRASTRUCTURE

- - - - - Preserve Boundary
- A Preserve Management Unit
- Management Unit Boundary
- Asian Carp Fence
- - - - - Eagle Marsh Trail
- Trail Number
- - - - - Towpath Trail (Fort Wayne Trails)
- △ Engle Road Trailhead
- Eagle Marsh Barn
- X-X Green gate (main entrance)
- X-X Yellow Gate (west entrance)
- - - - - Indiana Michigan Power Transmission Line
- 2 Transmission Line Tower and Reference Number

NATURAL COMMUNITIES

— Approximate boundary between natural communities. Some boundaries are abrupt, but most are broad, transitional zones (ecotones) whose positions may shift hundreds of feet during a particular growing season in response to hydraulically-driven environmental gradients

1 Permanent ponds. Depth and dimensions vary little over the growing season. The complex of former irrigation ponds behind the Eagle Marsh barn is the principal example

2 Ephemeral bodies of open water. Dimensions and depth typically change greatly over the course of a growing season. May completely dry up at times, though the substrate seldom is unsaturated. Includes oxbow ponds, former meander scrolls of the Little River, and other shallow water bodies of both natural and man-made origins

3 Marsh. Typically inundated early in the growing season, with hydric soils that support long hydroperiods. Soil seldom becomes unsaturated. Includes small areas of wet prairie and many small ephemeral pools

4 Sedge meadow. Exhibits strong seasonal hydrologic regime, very wet and sometimes inundated briefly early on, and becoming much less so later in the year

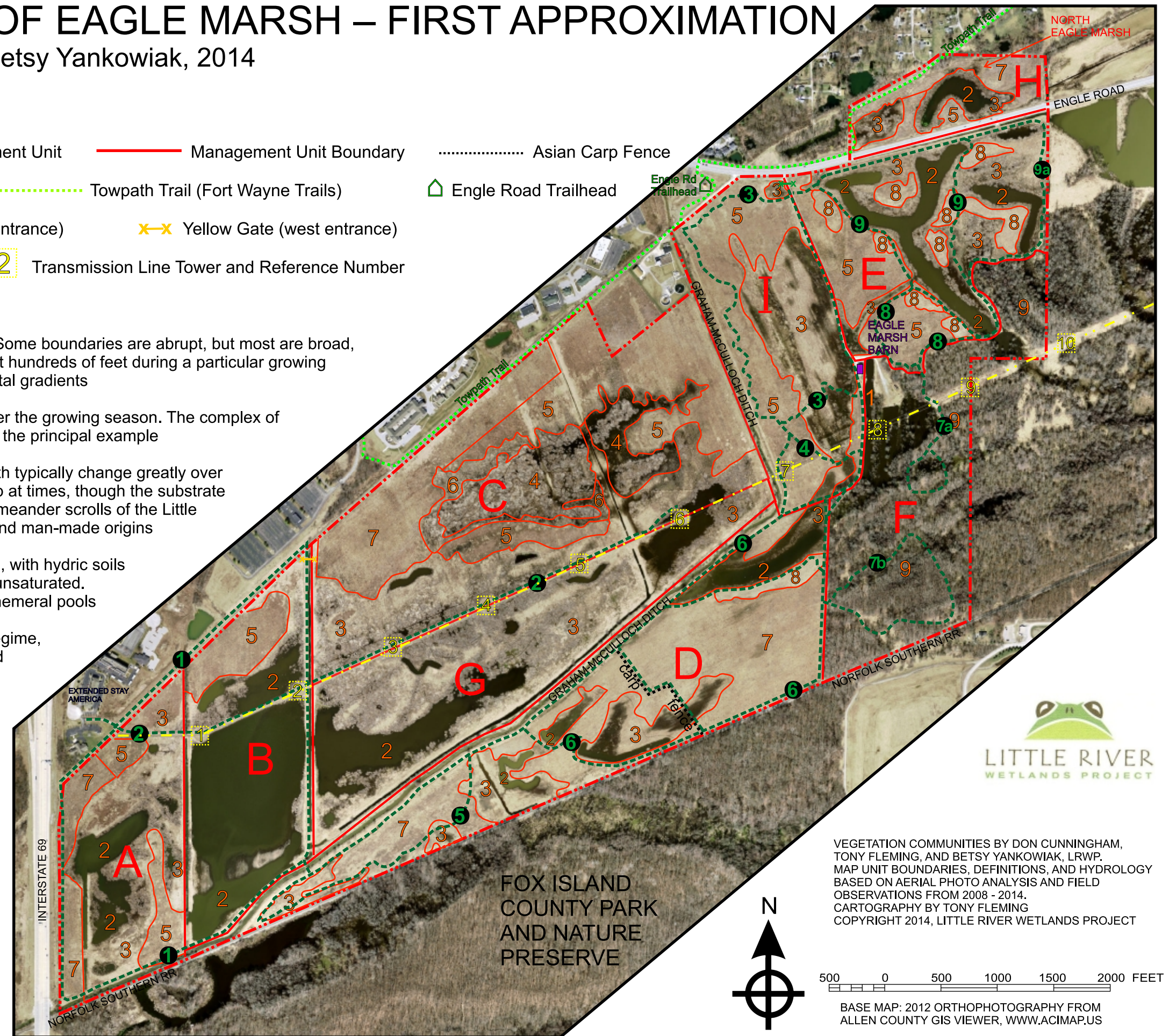
5 Wet to mesic prairie. Moderately strong seasonal hydrology, but is slightly more elevated and thus not as wet as the types above. Much of this unit exhibits very low relief sag-and-swell microtopography, leading to a mosaic of hydric to mesic soil conditions

6 Shrubland. Scrubby, mostly native shrubs and small pioneer trees fringing the sedge meadow. Occupies a narrow band of slightly higher and better drained soil. Sprouted after 2007

7 Rows of native trees/shrubs planted 2007-present

8 Mounds of subsoil left over from preserve restoration. Mesic prairie-like, commonly choked with invasives

9 Native forest. Mosaic of swamps and wet woods, with mesic hardwoods on low dunes. Mostly 25-75 years old with enclaves of older forest



VEGETATION COMMUNITIES BY DON CUNNINGHAM, TONY FLEMING, AND BETSY YANKOWIAK, LRWP. MAP UNIT BOUNDARIES, DEFINITIONS, AND HYDROLOGY BASED ON AERIAL PHOTO ANALYSIS AND FIELD OBSERVATIONS FROM 2008 - 2014. CARTOGRAPHY BY TONY FLEMING. COPYRIGHT 2014, LITTLE RIVER WETLANDS PROJECT



500 0 500 1000 1500 2000 FEET

BASE MAP: 2012 ORTHOPHOTOGRAPHY FROM ALLEN COUNTY GIS VIEWER, WWW.ACIMAP.US